

# Grand Soleil 45' (1991)

kept with love in a top-notch condition



New deck (2016)

**Lotos is a Grand Soleil 45' sailboat, well maintained cruiser, designed by German Frers in 1991, with two double & one single cabin, two heads with showers, kitchen with fridge, onboard chart computer, Raymarine chartplotters etc.**



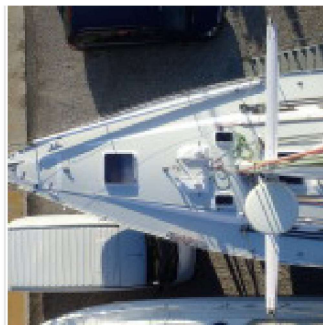
## Contact & Location

Location: [Aprilia Marittima \(Latisana\)](#)  
(UD) ITALIA

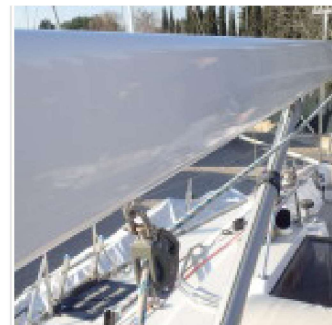
## Latest repairs



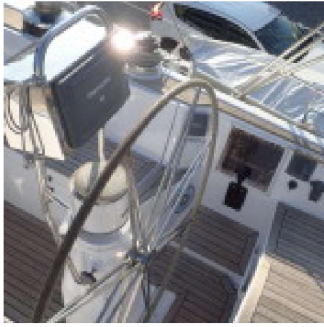
Genoa sheet bearing block overhauled in Jan 2016



Deck surface changed from teak to antislip in Oct 2015



Hull, mast & boom repainted in Sep 2015



Cockpit teak replaced in Oct 2015



Complete engine overhaul in 2014

## Specifications

Rig type:	Masthead Sloop
Designer:	German Frers
Builder:	Cantiere del Pardo
Make:	Grand Soleil
Model:	Grand Soleil 45'
Year constructed:	1991
Number	B43
Flag	Italian
Berths:	5+2
No. of engines:	1
Engine model:	Yanmar 4JH2E
Engine power:	46,02 kW (62,53 CV)
Fuel type:	Diesel
Propeller:	folding 3-blade Gori with "overdrive" function
Overall length:	13,94 mt



## Accommodation

In excellent condition throughout this very comfortable yacht offers:  
5+2 berths in 3 cabins and saloon with good stowage.

- 1 Double bed in fore cabin
- 1 Single bed in central cabin
- 2 Single beds in saloon
- 1 Standard size double bed in aft cabin

Hardwood saloon table

Hot air heating throughout - Webasto Air Top 500 ST

## Heads

- 2 Very clean and good sized head compartments
- 2 Jabsco heads (new 2010)
- 1 Holding tank - 25 litres - Vetus (new 2013)

Sink and shower; shower sump and electrical pump

## Galley

- 1 Refrigerator

Hot & cold pressurised water system - Boilex inox Quick

Gas cooker + 2 burners, a grill and oven SMEV electric ignition (new 2010)

3 kg propane gaz cylinder

Stainless steel double sink with mixer tap

## 2 Stainless steel Water tanks and electric water tank gauge

Water system drained and pump removed annually

## Deck

1 1500 electric windlass

100m chain 10 mm (new 2015)

25 kg Delta anchor with 100 mt chain 10 mm

15 kg Danforth anchor

2 Lewmar 66 self-tailing sheet winches electric

4 Lewmar 43 self-tailing halyard winches

2 Lewmar 46 self-tailing winches

1 Lewmar 30 self-tailing winch on mast base

Adjustable mainsheet traveller

Adjustable genoa travellers (from cockpit)

Folding boarding ladder (stainless steel)

Sprayhood

External helm and compass cover

Main hatch/entrance cover

Inflatable dinghy Zodiac FR285ACTI-V Series Z11408 with Tohatsu MFS 3,5 XF engine

6 Cylindrical fenders and 4 spherical fenders

- Boat hook
- 3 winch handles
- 1 backstay NAVTEC 7 integrail adjuster. Revised in January 2014.

## Sails & Rigging

- Standing rigging (new 2010)
- Running Dynema backstays (new 2016)
- 1 Spinnaker pole
- 1 Mainsail with 3 reef system (39.48 m<sup>2</sup>)
- 1 140% Genoa with furling system (47.47 m<sup>2</sup>)
- 1 Gennaker (140 m<sup>2</sup>)
- 1 Spinnaker (169 m<sup>2</sup>)
- 1 Jib (9 m<sup>2</sup>)
- 1 Storm jib (6 m<sup>2</sup>) (new 2014)

All sails checked annually

## Navigation equipment

### in cockpit

- 1 Riviera White Star 6. mounted compass. (revised in March 2016)
- 1 Raymarine E80 chart plotter with radar (new 2010)
- 1 Raymarine ST60 wind, depth and speed (new 2010)

1 Raymarine ST7001 autopilot with smartpilot control

1 Raymarine Digital echo DSM 300

#### at chart table

1 VHF Ocean RO 4700

1 Raymarine E120 chart plotter with radar and echosounder (new 2010)

1 Industrial PC fanless with 15" screen with MaxSea Time Zero and many charts available.

## Electric

Blue Sea Systems DC distribution board

Blue Sea System 230 Volt AC break

Blue Sea System 230 Volt AC no break

1 engine battery 100 Ah (new 2012)

1 generator battery 100 Ah (new 2012)

3 domestic batteries 360 Ah (new 2013)

1 Quick charger 12/40-3

1 Inverter 600 W (new 2016)

1 Mastervolt battery Mate

1 Yanmar Alternator charging 80 A (new 2010)

1 Shore power system with trip switches



- 1 Automatic switch shore/generator/inverter
  
- 1 220v Mastervolt Whisper 3,5 kW generator with Digital Diesel Control (Overhaul in 2014)
  
- 1 220v immersion heater (new 2010)
  
- 2 Air Conditioning systems covering cabins, heads and saloon.

## Safety equipment

Cockpit lights red & white

Interior red lights for night navigation

Safety Equipment

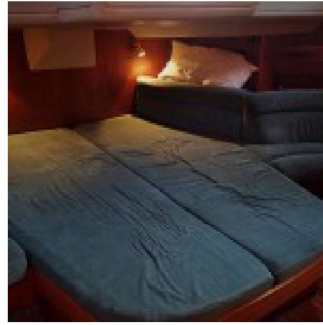
- 1 Radar reflector
  
- 1 Arimar liferaft 8 person (Revised on April 2016)
  
- Bilge pump - manual and electric (new 2010)
  
- 1 Flares (new 2013)
  
- 5 lifejackets

## Pictures

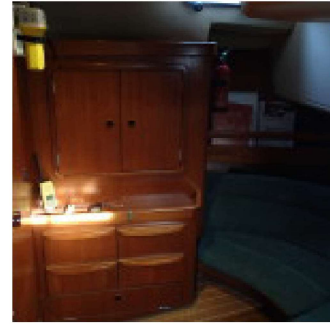
### Captain's cabin



Captain's cabin - door



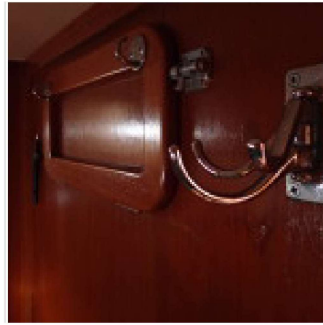
Captain s cabin - berth



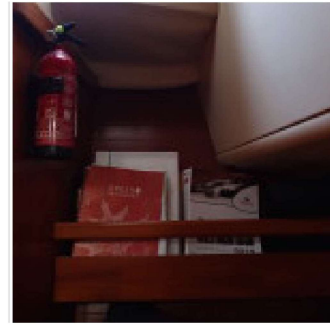
Captain's cabin - lockers



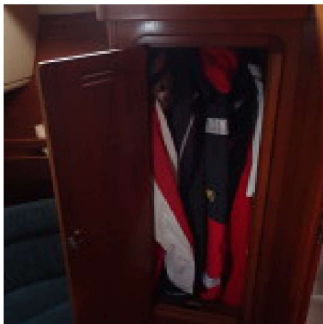
Captain's cabin - window



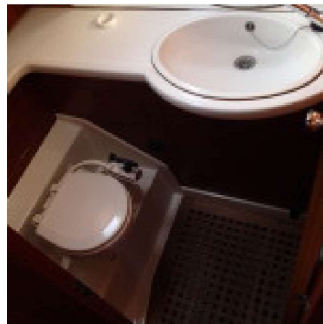
Captain's cabin



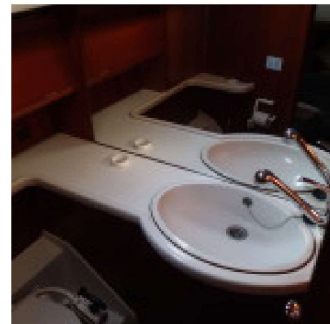
Captain's cabin



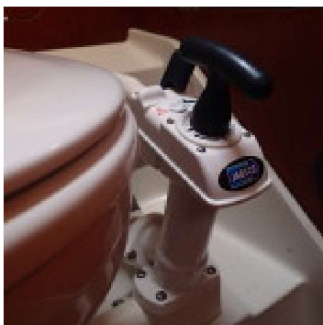
Captain's cabin - stowage



Captain's head

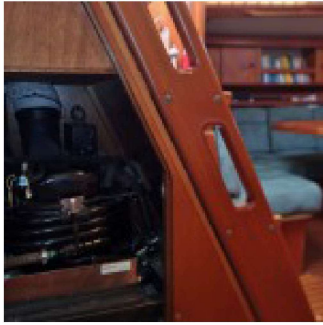


Captain s head

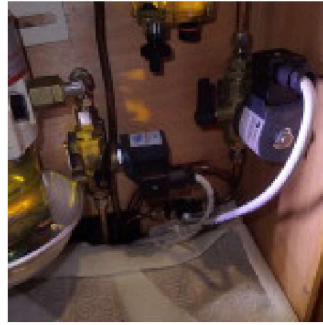


Captain's head

## Equipment



Air conditioning



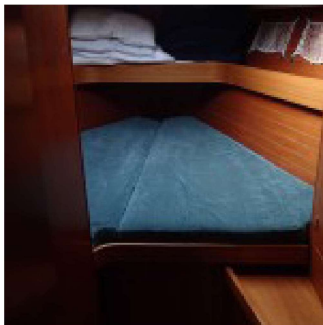
Diesel filters & cutoff



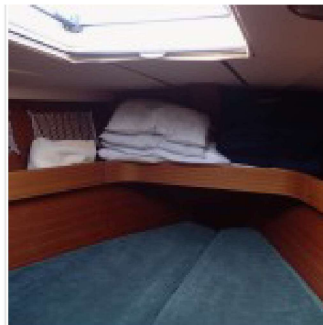
Silent diesel generator



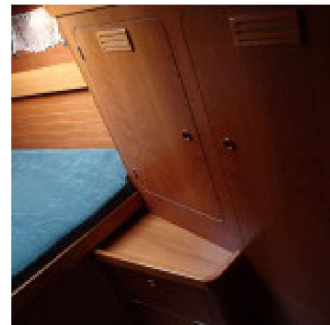
## Fore cabin



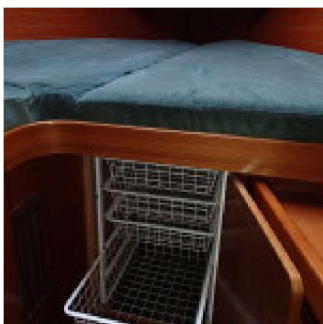
Forecabin



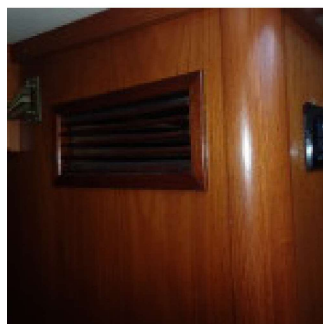
Forecabin



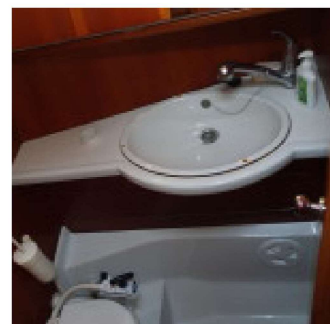
Forecabin



Forecabin - food Storage



Forecabin - A/C output

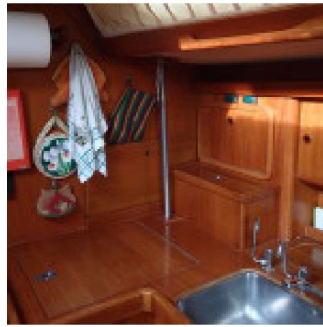


Fore head

## Galley



Galley



Galley



Galley



Galley

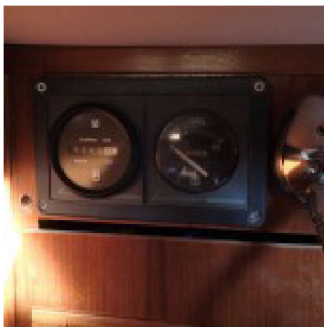


Galley

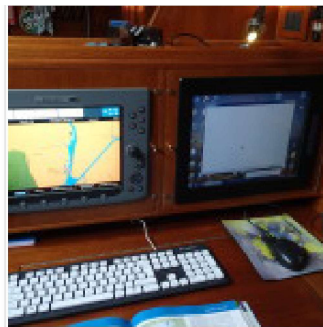


Galley

## Navigation table



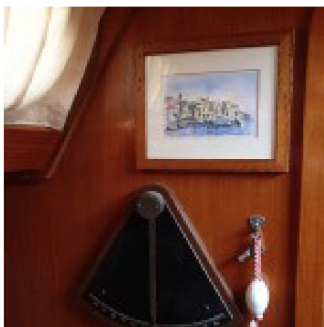
water level



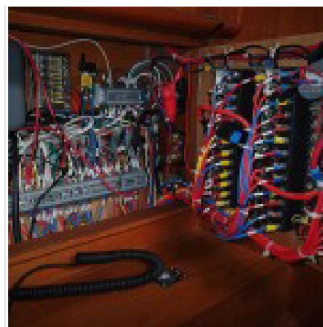
Navigation table



DC distribution board



Inclinometer



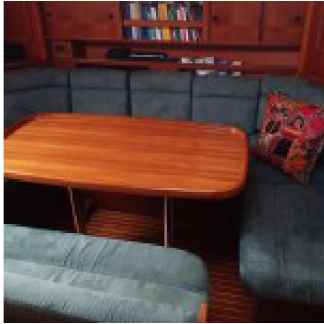
DC distribution board



Safety instruction



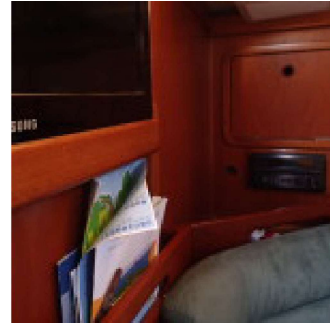
Saloon



Saloon



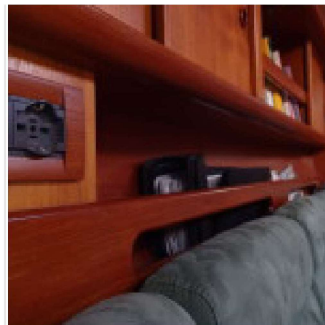
Saloon



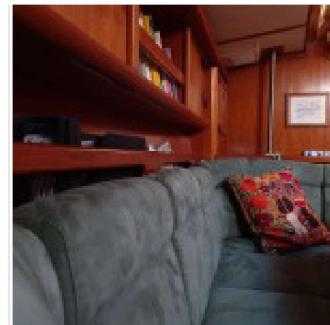
Saloon



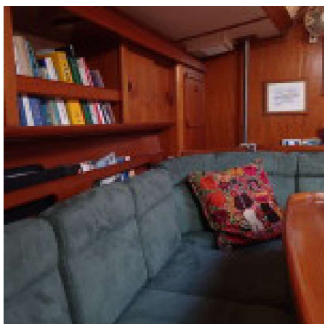
Saloon



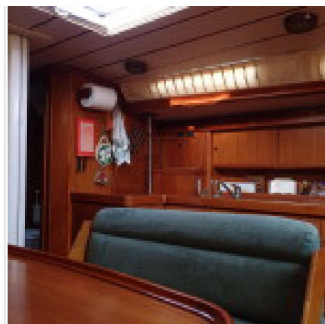
Saloon



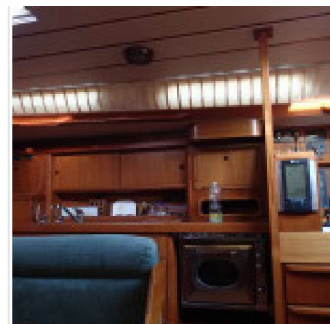
Saloon



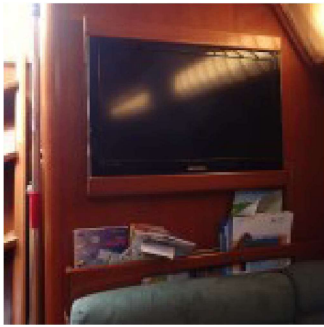
Saloon



Saloon



Saloon



Saloon

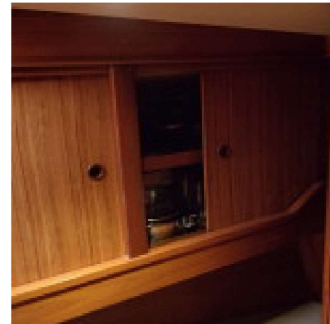
## Single cabin



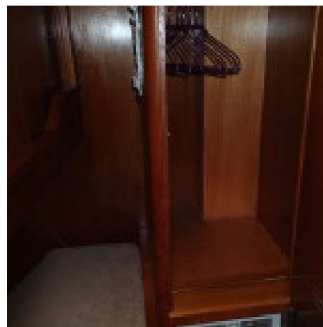
Single cabin



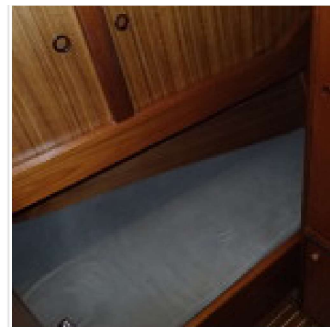
Single cabin



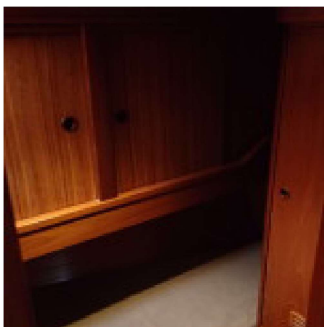
Single cabin



Single cabin



Single cabin



Single cabin



Single cabin

## Others



Complete engine overhaul in 2014



chain locker, shower



External chartplotter A 80



Autopilot display



Diesel generator



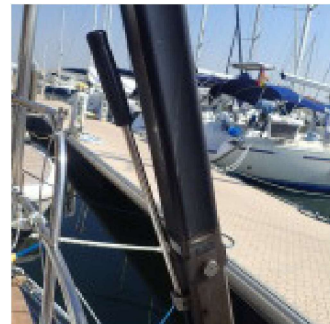
Radar



Antennas



Ladder



Navtex 7 integral adjuster



Barboteen